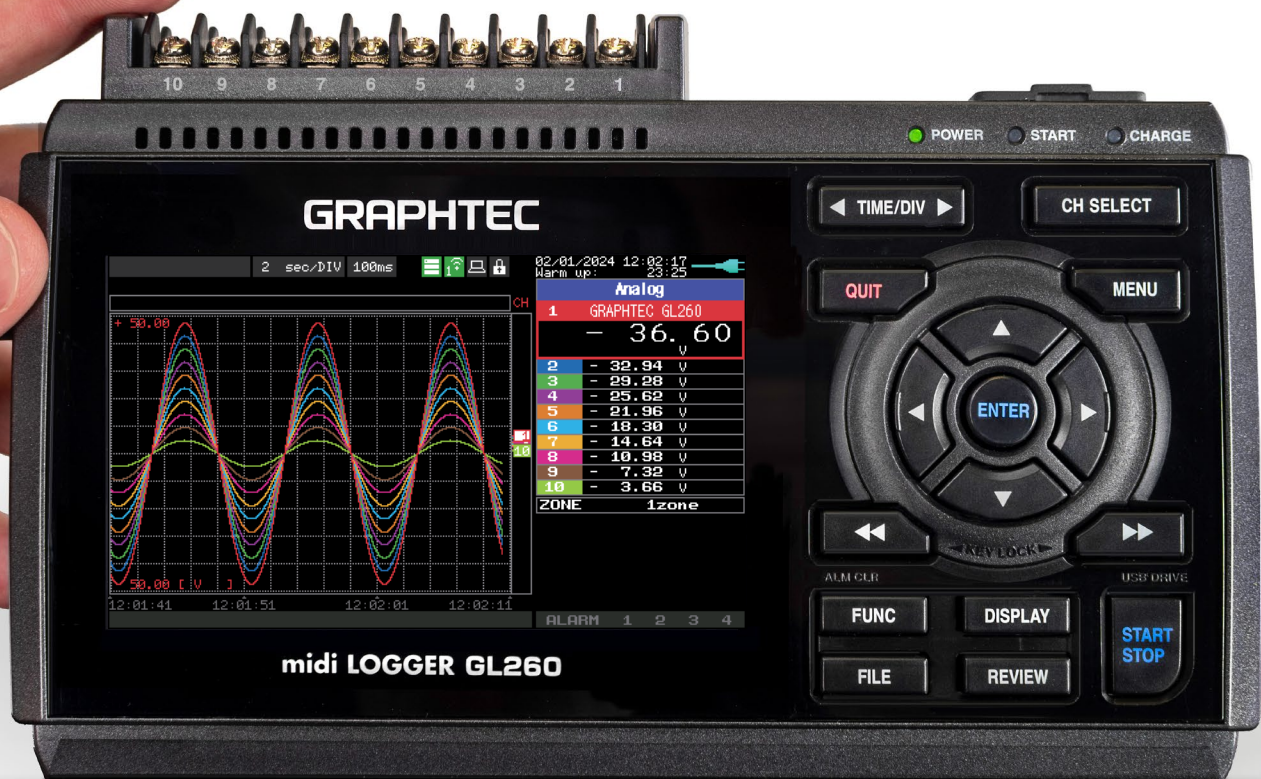


GRAPHTEC INSTRUMENTS

Compact Standalone

GL260 data LOGGER



Evolved

SIMPLE • PORTABLE • VERSATILE

NEW FEATURES including **CLOUD ACCESS**



GRAPHTEC
Graphtec America, Inc.

Alarm History Function

- Easy search of event dates and history

Enhanced CH to CH Calculation

- New calculation functions added

Memory Loop Function

- Enables recording for longer periods of time

G-REMOTE

- Cloud Server Service
- Remote Control Service
- Data Storage Service

*Additional charge for use.

*Offered in limited areas only.

SPECIFICATIONS

Item	Description	
Analog input	Number of channels	10ch / Screw terminal (M3)
	Type	Scans channels for sampling, All channels isolated, balanced input
	Measurement range	Voltage: 20mV - 100V, 1-5V F.S. Thermocouple: K, J, E, T, R, S, B, N, C and (the old W: WRe5-26) Humidity: 0 - 100% (optional item B-530 is required)
	Filter	Off, 2, 5, 10, 20, 40 (moving average in selected number)
	Max. input voltage	Between(+) / (-) terminal 20mV - 1V range: 60V p-p 2V - 100V range: 110V p-p Channels ((-) / (-)): 60V p-p Channel / GND: 60V p-p
External input (*1)	Number of channels	Trigger of Sampling (1 channel), or External Sample Inputs 1ch Logic / Pulse (4 channel)
	Pulse input	Rotation count (RPM) mode (*2) Accumulating count mode Instant count mode Max. input frequency : 50kHz / Max. count: 50kc / sampling
External output (*1)		Alarm output: 4ch
Scaling function		Analog channel, Pulse channel
Sampling interval		10ms - 1h (10ms to 50ms: voltage only, limited number of CH) External signal
A/D converter		$\Delta\Sigma$ type, 16Bit (effective resolution: 1/40,000 of \pm range)
PC I/F		USB2.0, wireless LAN (optional item B-568 is required)
Storage medium (*3)	Storage	Built-in memory : approx. 8GB, SD card slot: 1
	Data format	GBD / CSV
Capturing mode		OFF (default), Ring, Relay
Other functions		Calculation function, Trigger, Alarm function, Data backup function(*4)
Display		4.3" TFT (WQVGA: 480 x 272 dots)
Operating environment (*5)		0 - 45°, 5 - 85% RH
Power source	AC adaptor	AC100 - 240V / 50 - 60Hz
	DC input	DC 8.5 - 24V (optional item B-514 is required)
	Battery pack	DC 7.2V (2875mAh) (optional item B-573 is required)
Power consumption		Max. 36VA (when AC100V)
Dimensions		188 (W) x 117 (D) x 42 (H) mm
Weight		500g (excluding AC adaptor and battery pack)
Vibration resistance		Equivalent to Automobile parts Type 1 Class A

OPTIONS

Item	Model No.	Description
GL wireless LAN unit	B-568	Standard: IEEE802.11b / g / n Communication distance: approx. 40m (Depending on the situation)
Battery pack	B-573	1 unit: 7.2V/2875mAh
Input/Output cable for GL	B-513	2m long (no clip on end of cable)
DC drive cable	B-514	2m long (no clip on end of cable)
Humidity sensor (*7)	B-530	3m long (with power plug)
Shunt resistor 250Ω	B-551-10	$\pm 250\Omega$ (0.1%), Rated power of 1 W, Maximum operating voltage 15.8V
AC adapter for GL260	ACADP-20	AC adapter for maintenance
Type K TC adapter	TC-K-5	Type K mini-connector to spade lugs, 12", 5 pack
Type T TC adapter	TC-T-5	Type T mini-connector to spade lugs, 12", 5 pack
Pelican case	B-536US-260	Custom Pelican case for GL260

CLOUD SERVICE (G-REMOTE)

(*Additional charge for use)

Item	Description
Supported OS (*6)	Windows 11/10
Supported WEB browser	Google Chrome (recommended), Microsoft Edge, Firefox (*Internet browser supporting HTML5)
Service content	<Remote control service> Easy remote control and confirmation of measurement data from G-REMOTE on a browser via an Internet connection <Data save service> Storing data on Graphtec cloud servers via Internet connection * For more information about product, please check the web site



Max Sampling Interval of up to 10ms

By narrowing down the number of channels, enabled to record data in max. 10 ms.

Sampling Interval		10ms	20ms	50ms	100ms
Number of CHs		1	2	5	10
Measuring	Voltage	✓	✓	✓	✓
	Temp.	—	—	—	✓

8GB memory for reliable long-term measurement

Recording time example (when only 10 analog channels are used, 2 GB recorded)*

Sampling Interval*2	10ms	50ms	100ms	200ms	500ms	1s
GBD Format	41 days	88 days	103 days	207 days	Over 365	Over 365 ¹
CSV Format	3 days	12 days	18 days	36 days	91 days	182 days

*1: Recording times are approximate.

*2: Depending on the sampling interval, the number of channels are limited. 10ms: 1ch, 20ms: 2ch, 50ms: 5ch

SOFTWARE SPECIFICATIONS PC

Item	Description
Supported OS (*6)	Windows 11/10
GL28-AP5	PC for date logger settings, data recording, storage, playback
	Supported Models: GL260/GL840/GL240
	Connectable Units / channels: Max. 10 units / 1,000ch
GL-Connection	GL Series Integration Software
	PC for date logger settings, data recording, storage, playback
	Supported models: GL7000/GL2000/GL980/GL840 GL240/GL260/GL400
	Connectable units: 20
	Max. 2000ch

CALIBRATION (Production Data)

Item	Code
NIST-CAL	NIST calibration with cert.
NIST-CAL-DATA	NIST calibration with cert & data
ISO-17025-260	ISO-17025 calibration for GL260

*Documents ordered at the time of product purchase are data at the time of manufacture.

*Please visit calibration services section of our website for details.

*1: Input/Output cable for GL (option B-513) is required.

*2: The pulse count mode counts the number of pulses per sample interval and converted to revolutions per minute.

*3: Recorded in 2GB per file, SD cards available.

*Supported SDHC, up to approx. 32GB memory

*4: If the ring setting and external sampling function is ON, the backup function is not available.
If the backup destination is FTP, GL wireless LAN unit(B-568) is required.

*5: When operating with battery pack 0 to 40° C, charging battery 15 to 35° C

*6: OS that are no longer supported by the OS manufacturer are not supported by Graphtec.

*7: Available temperature range: -25~+80° Special order/ 10m, 15m, 20m available

*8: Specifications are subject to change without notice as this is a commercial product.

- Due to the possibility of equipment or PC failure, the data files on the instrument will not be guaranteed to be held on the memory.
- Please make a back up of data whenever possible to avoid data loss
- Brand names and product names listed in this brochure are the trademarks or registered trademarks of their respective owners.
- Items mentioned are subject to change without notice. For more information about product, please check the web site or contact your local representative.



For using equipment in correctly and safely

• Before using it, please read the user manual and then please use it properly in accordance with the description.

• To avoid malfunction or an electric shock by current leakage or voltage, please ensure a ground connection and use according to specifications.



GL260_g_KE10950_10

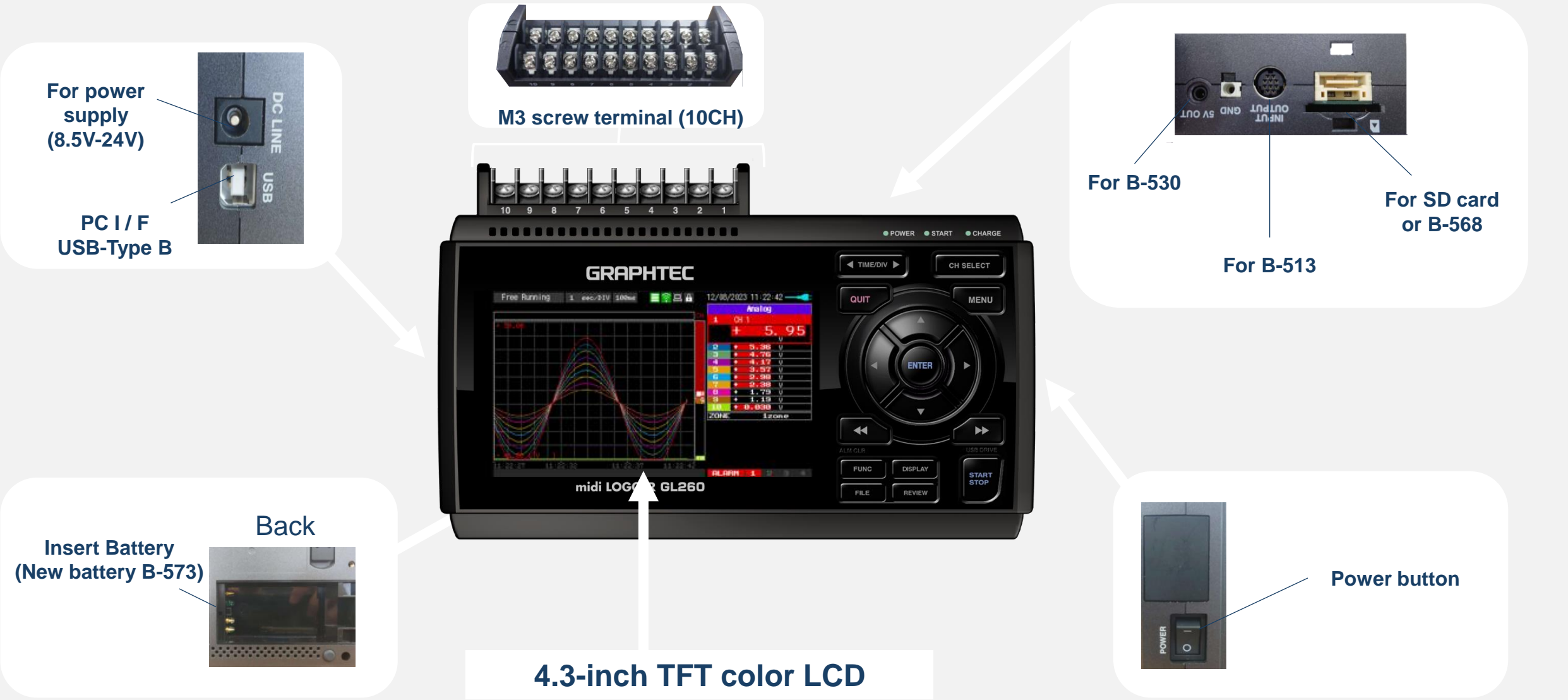
GL260

About the Unit



Unit Design

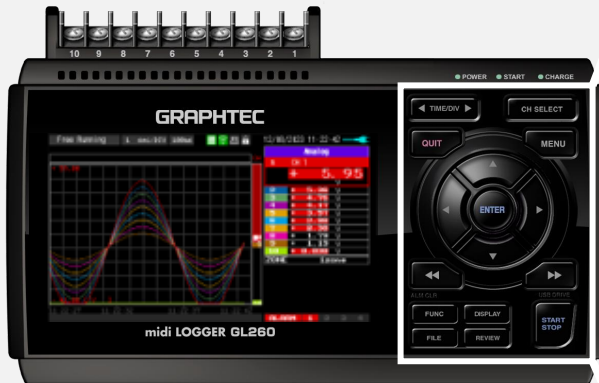
Interface



Control panel key

TIME / DIV: Change Time axis display width

Quit: Quit / Back



NEW

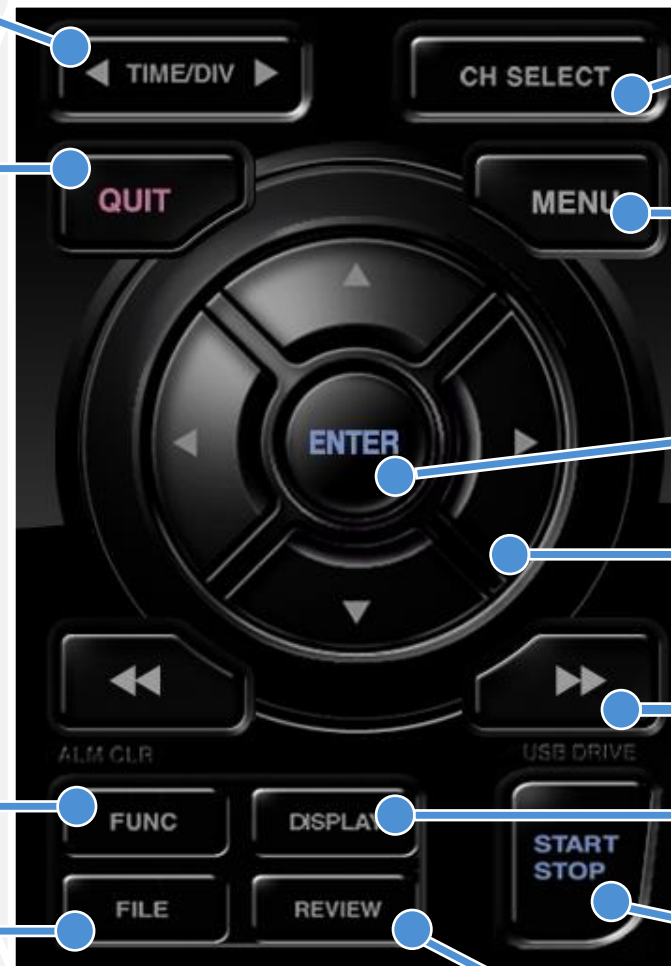
FUNG: Shortcuts for useful functions

*Changed from "Cursor" in GL240

NEW

FILE: Open File menu

*Changed from "File / Group" in GL240



NEW

CH SELECT: Select CH Category
(Analog / Logic-Pulse / Calculation)

*Changed from "SPAN / POSI / TRACE" in GL240

MENU: Open setting menu

NEW

ENTER: Enter / **Open waveform setting**

▲▼▶◀: Cursor Key

◀◀ / ▶▶: Fast forward key (KEY LOCK)

DISPLAY: switch display mode

START / STOP: Start / Stop for recording

REVIEW: Playback of recorded files

Improved Visibility

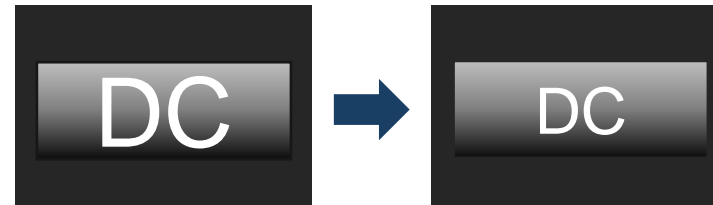


3 visibility improvements

Display chromaticity

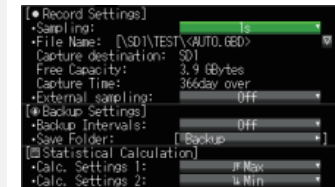


Changed font



Changed menu tree

hard to read...



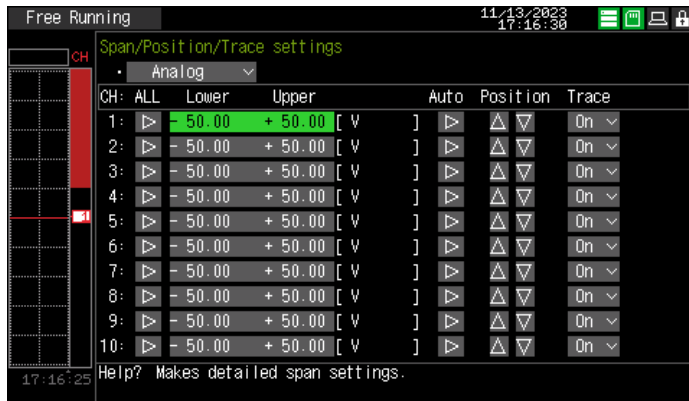
Simplified the menu tree and made it more intuitive.
(Menu Key & FILE Key)

Improved Operability



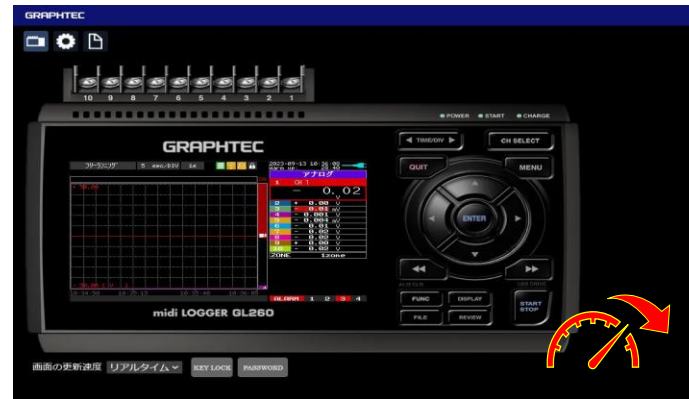
3 operability improvements

Simplified waveform setting



Intuitive SPAN / POSI /
TRACE operation.

Web server function



Faster update speed.

HELP-QR function



QR code for more detailed
information.

Simplified waveform setting

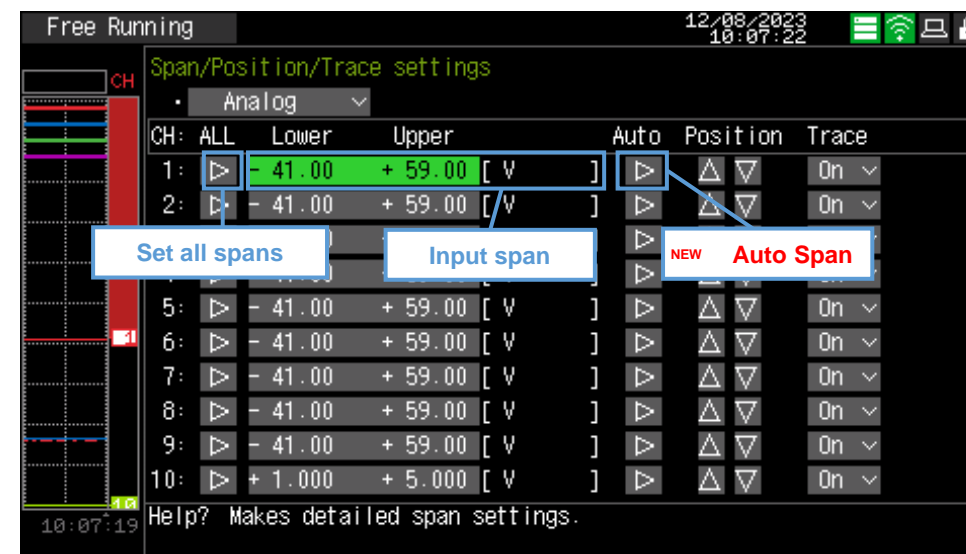


SPAN / POSI / TRACE settings can now be configured in less steps.

1 click to display waveform setting



Actual screen



More intuitive setting with **auto span**

HELP – Display QR Code



Scan the QR code to see the related web page
and check the detailed information.

QR code



HELP icon & QR code

Directed to FAQ



Access



By scanning the QR code in each setting item,
users can reach to information on the FAQ web page.

FAQ Supported languages: Japanese and English

Faster WEB server function



For smoother operation, CPU processing speed has been increased and settings screen has been renewed.

Faster update speed



Smooth operation is now possible with faster processing speeds.

New setup screen design



Install the same setup screen design as the logger. Data in the loggers can be downloaded.

News

The **game function** has been restored aiming to familiarize users with key operations.

Number order game

Arrange in order from 1

<Rules>
Arrange from 1 to 15

[START]: Start
[CURSOR]: Move curs.
[ENTER]: Move panel
[REVIEW]: Redo
[QUIT]: End

Total points: 0

3	1	7	
2	12	10	13
9	6	4	15
5			

Number order

Reversi game

[START] starts the game

<Rules>
Rival's stone is placed, upset, and one with a lot of stones wins at end

[START]: Start
[CURSOR]: Move curs.
[ENTER]: Drop stone
[REVIEW]: Pass
[QUIT]: End

Total points: 0

First move Second mover

Reversi

1024 Game

Match numbers.

<Rules>
Combine the same numbers to make 1024

[START]: Start
[CURSOR]: Move panel
[QUIT]: Quit game

Total points: 0

Elapsed: 00:00:06

1024

		2	
		2	2
			4

[START]: Start
[CURSOR]: Move curs.
[FLEFT]: Enter num.
[FRIGHT]: Enter num.
[REVIEW]: Review
[QUIT]: Quit Game

Total points: 0

Elapsed: 00:00:30

Sudoku

4	7	2	3	6	9		
		5		9			4
	9	3			2	8	
7		2	3	9		6	
	6	5			7	3	
6	2		9	8			
		4	7		9	3	
8			2	1	5		

< MENU > ➡ < OTHER > ➡ < Game >

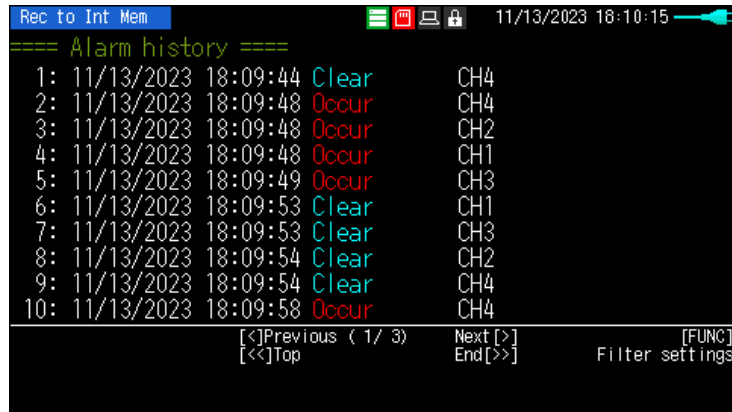
New Functions





3 new functions

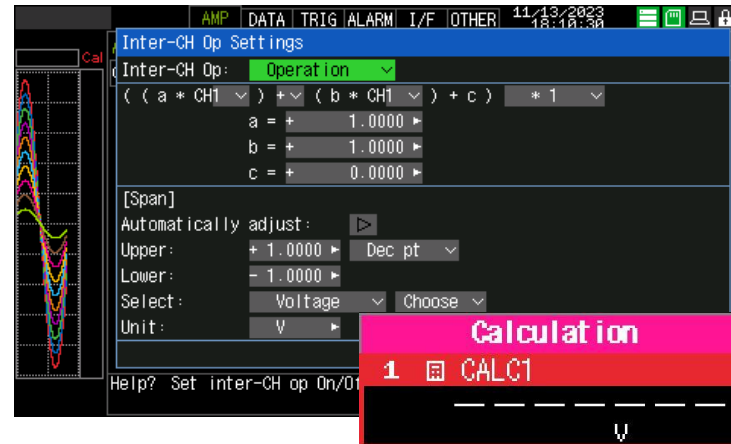
Alarm History



==== Alarm history ====			
1:	11/13/2023 18:09:44	Clear	CH4
2:	11/13/2023 18:09:48	Occur	CH4
3:	11/13/2023 18:09:48	Occur	CH2
4:	11/13/2023 18:09:48	Occur	CH1
5:	11/13/2023 18:09:49	Occur	CH3
6:	11/13/2023 18:09:53	Clear	CH1
7:	11/13/2023 18:09:53	Clear	CH3
8:	11/13/2023 18:09:54	Clear	CH2
9:	11/13/2023 18:09:54	Clear	CH4
10:	11/13/2023 18:09:58	Occur	CH4

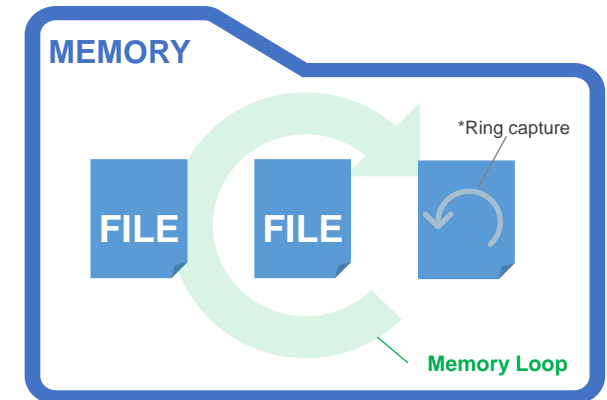
Display of alarm history

New calculation



Newly installed calculation CH coefficients can be used for CH calculations.

Memory Loop



Circulation recording is now possible in relay capturing

Alarm History

What is Alarm History Function?



This function **shows the date / time history of alarm occurrence / cancellation.**

Actual screen

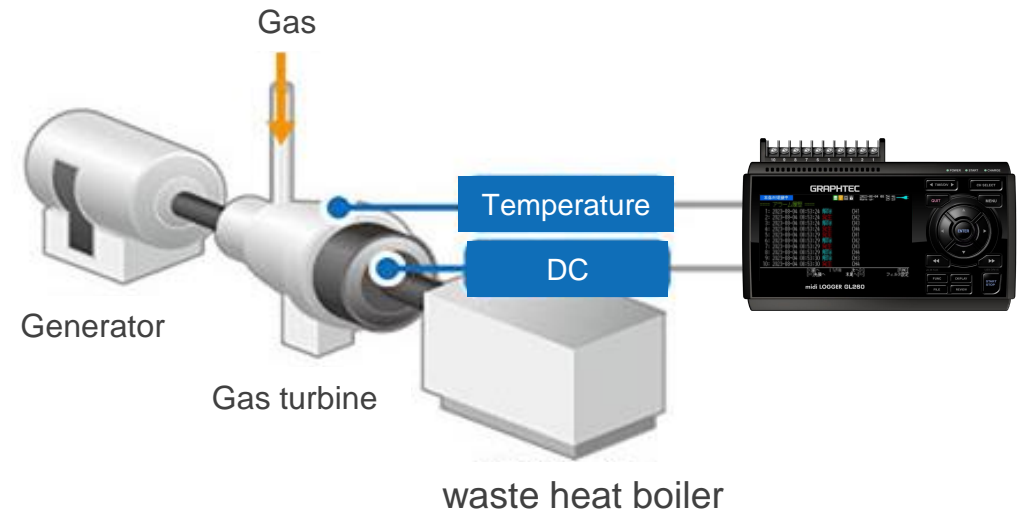
Date and time of alarm		Alarm occurrence CH	
1:	11/14/2023 13:10:57	Occur	CH4
2:	11/14/2023 13:10:57	Occur	CH2
3:	11/14/2023 13:10:58	Occur	CH1
4:	11/14/2023 13:10:58	Occur	CH3
5:	11/14/2023 13:11:02	Clear	CH1
6:	11/14/2023 13:11:02	Clear	CH3
7:	11/14/2023 13:11:03	Clear	CH2
8:	11/14/2023 13:11:03	Clear	CH4
9:	11/14/2023 13:11:07	Occur	CH4
10:	11/14/2023 13:11:07	Occur	CH2

[<]Previous (1 / 3) Next [>] [FUNC] Filter settings
[<<]Top End[>>]

Easily check the CH and date of alarm occurrence at once.

Usage

Gas turbine maintenance



Alarm occurs due to temperature abnormality



Easily **check the alarm occurrence date and time** with alarm history function.



Target Users

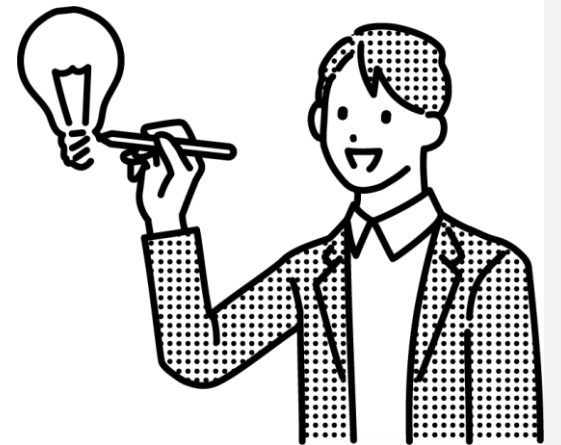
- ☒ Want to keep a record of the condition.
- ☒ Want to check the alarm history during recording.
- ☒ Want to use the alarm function.



Production
Monitoring

Testing

Condition
Monitoring

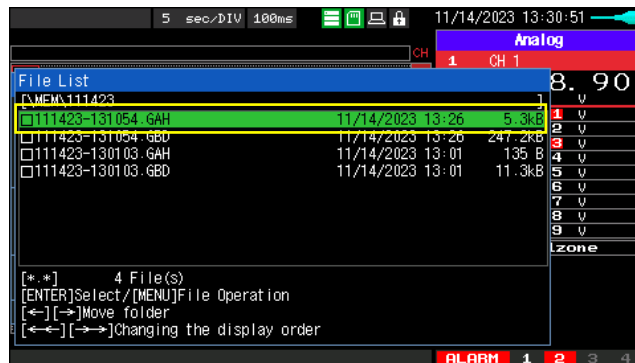


Alarm History - Data format-



Alarm history data is saved in **text format data**.

- Alarm history data is saved in .GAH format.
- GAH can be opened as a text file.



111423-131054.GAH - メモ帳

ファイル(F) 編集(E) 書式(O) 表示(V) ヘルプ(H)

Vendor, "GRAPHTEC Corporation"
Model, "GL260"
Version, "1.00"
Suffix, ""

Number	Data position	Date	Time	CH	Flag	Remarks
1,7888	2023/11/14,13:24:02	CH1,4	"Clear	CH1"		
2,7888	2023/11/14,13:24:02	CH3,4	"Clear	CH3"		
3,7896	2023/11/14,13:24:03	CH2,4	"Clear	CH2"		
4,7897	2023/11/14,13:24:03	CH4,4	"Clear	CH4"		
5,7937	2023/11/14,13:24:07	CH4,1	"Occur	CH4"		
6,7938	2023/11/14,13:24:07	CH2,1	"Occur	CH2"		
7,7945	2023/11/14,13:24:08	CH1,1	"Occur	CH1"		
8,7946	2023/11/14,13:24:08	CH3,1	"Occur	CH3"		
9,7988	2023/11/14,13:24:12	CH1,4	"Clear	CH1"		
10,7988	2023/11/14,13:24:12	CH3,4	"Clear	CH3"		
11,7996	2023/11/14,13:24:13	CH2,4	"Clear	CH2"		
12,7997	2023/11/14,13:24:13	CH4,4	"Clear	CH4"		
13,8037	2023/11/14,13:24:17	CH4,1	"Occur	CH4"		
14,8038	2023/11/14,13:24:17	CH2,1	"Occur	CH2"		
15,8045	2023/11/14,13:24:18	CH1,1	"Occur	CH1"		
16,8046	2023/11/14,13:24:18	CH3,1	"Occur	CH3"		
17,8088	2023/11/14,13:24:22	CH1,4	"Clear	CH1"		
18,8088	2023/11/14,13:24:22	CH3,4	"Clear	CH3"		
19,8096	2023/11/14,13:24:23	CH2,4	"Clear	CH2"		

*GAH files are saved in **the same folder as the recorded files**.

New Calculation

What is the CH-to-CH calculation function?

Calculation function between two CHs.

=> Ex.) CH1 + CH2 = X

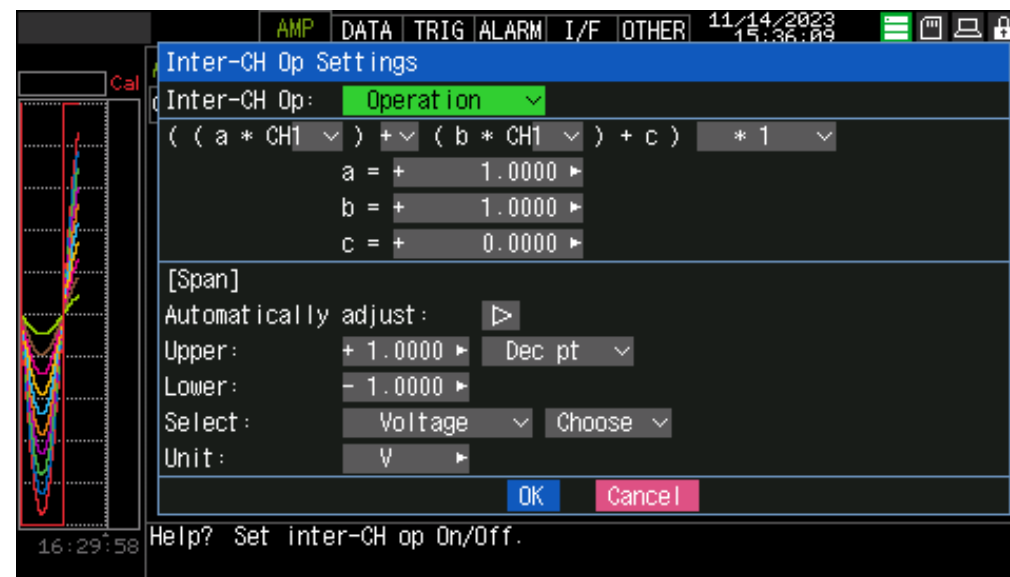
GL240 calculation function

- Overwrite analog CH with calculation
= 1 CH occupied by calculation.
- Calculation is only between CHs
= Coefficients are not available.

=> **Only limited calculation** can be performed.

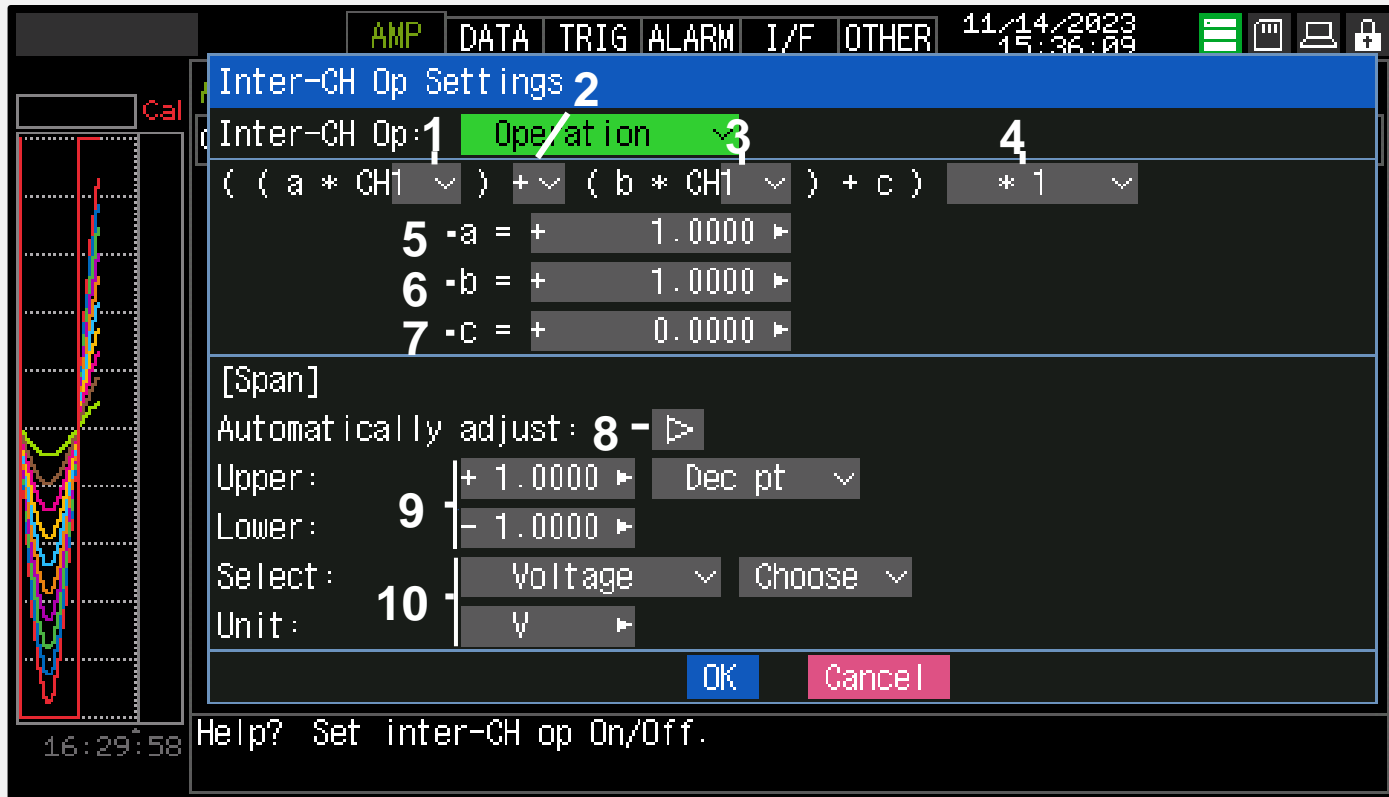
GL260 New Calculation

- **Dedicated CHs** for calculation is set up
- **Coefficients** can now be used
- **Two types** of calculation can be selected



<Calculation> Arithmetic equation

Output calculated data using **coefficients** or **adjusting the number of digits** are now available.



[Arithmetic equation]

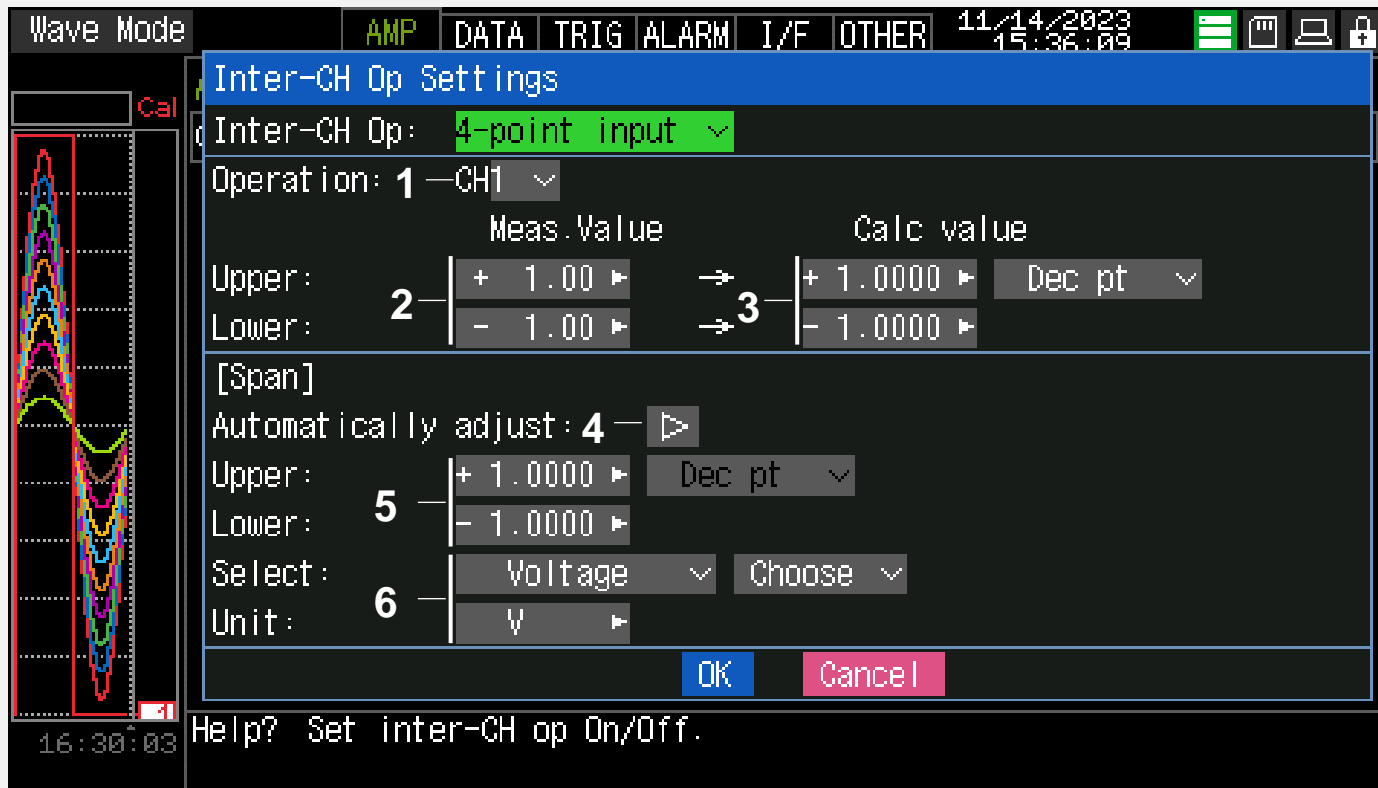
1. CH referenced by calculation
2. Arithmetic symbols
3. CH referenced by calculation
4. Digit adjustment
5. Coefficient a
6. Coefficient b
7. Coefficient c

[Span]

8. Auto span
9. Manual input
10. Select the unit of output value

<Calculation> 4-point input

The 4-point input enables **temperature slope calculation** output.
(Allows adjustment of graph tilt)



[4-point input]

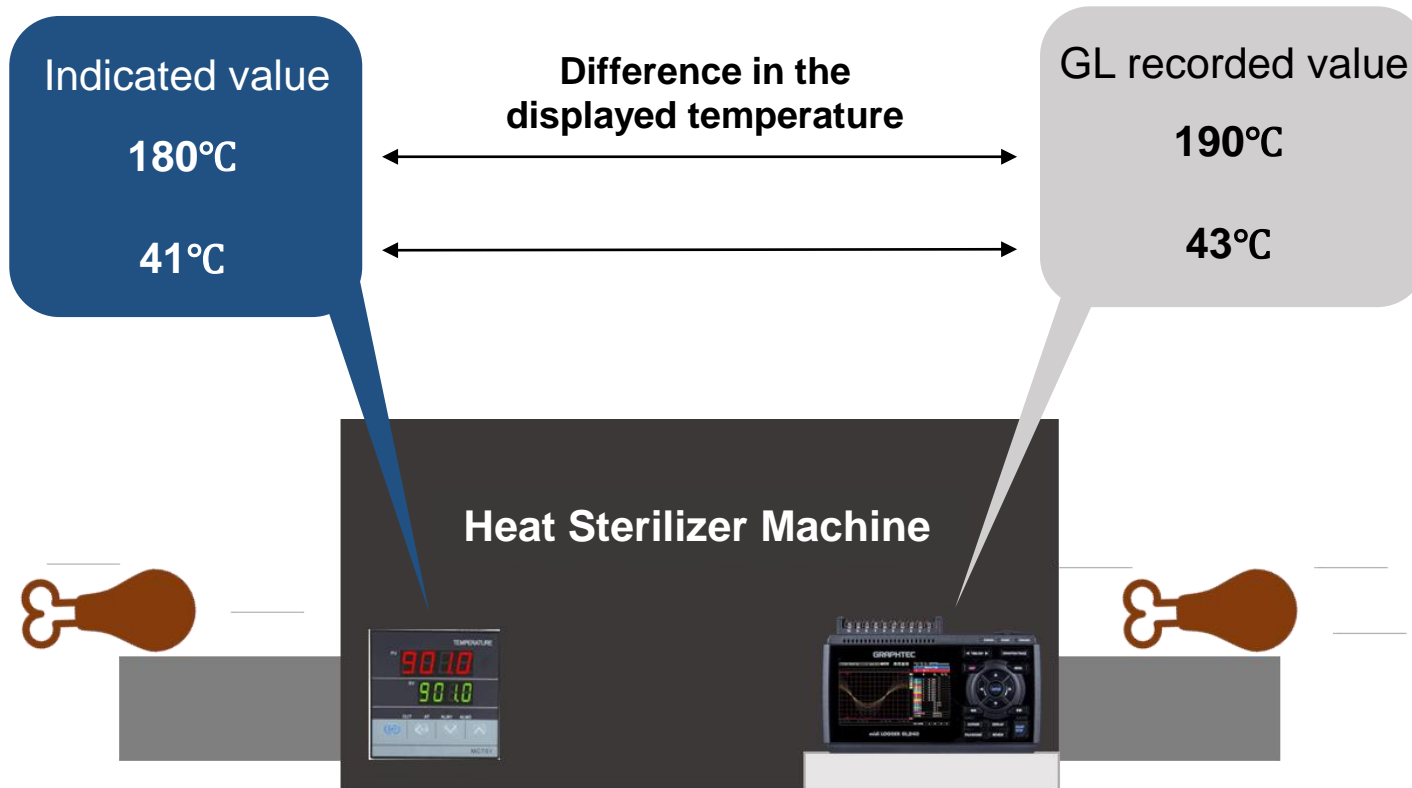
1. Upper and lower limits of measured value
2. Four arithmetic operations
3. Upper and lower limits of output values

[Span]

4. Auto span
5. Manual input
6. Unit Selection of output value

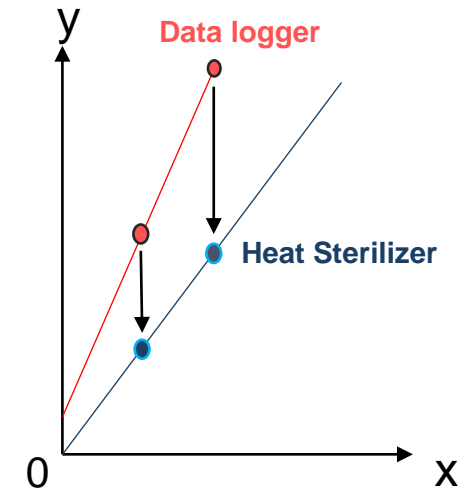
<Calculation> Application Example

Temperature display adjustment in Heat Sterilizer



4-point input

Adjust the difference of displayed temperature between the sterilizer and data logger.

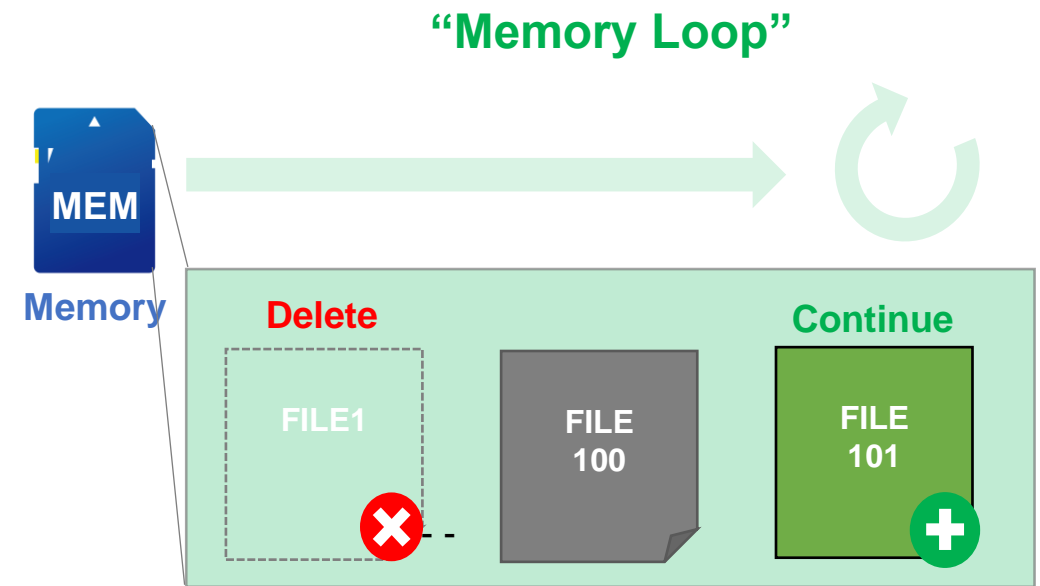
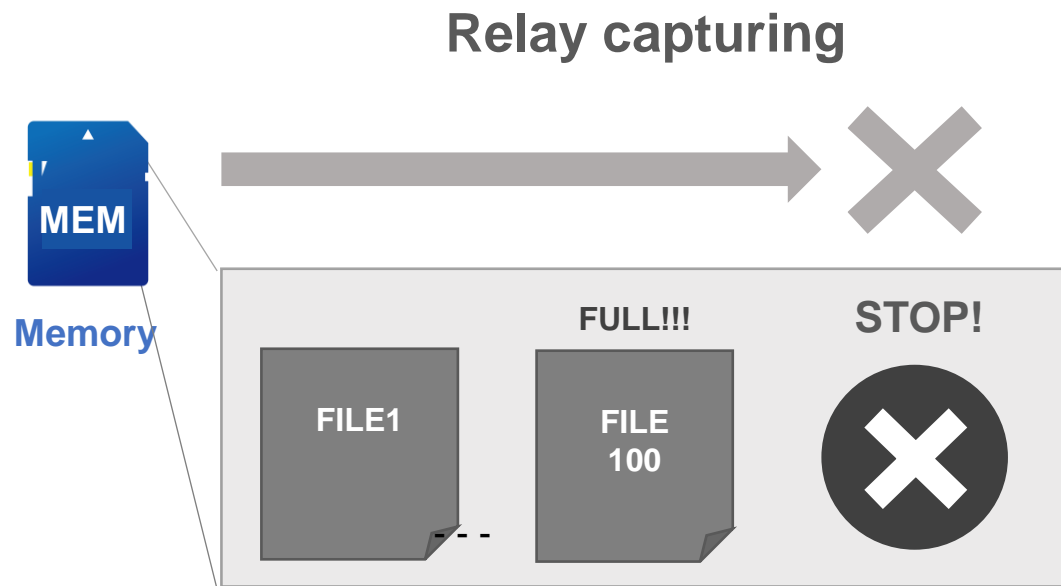


Memory Loop Function

What is Memory Loop Function?



A new optional function of Relay capturing that **automatically deletes the oldest files** before memory capacity runs out and continues recording.



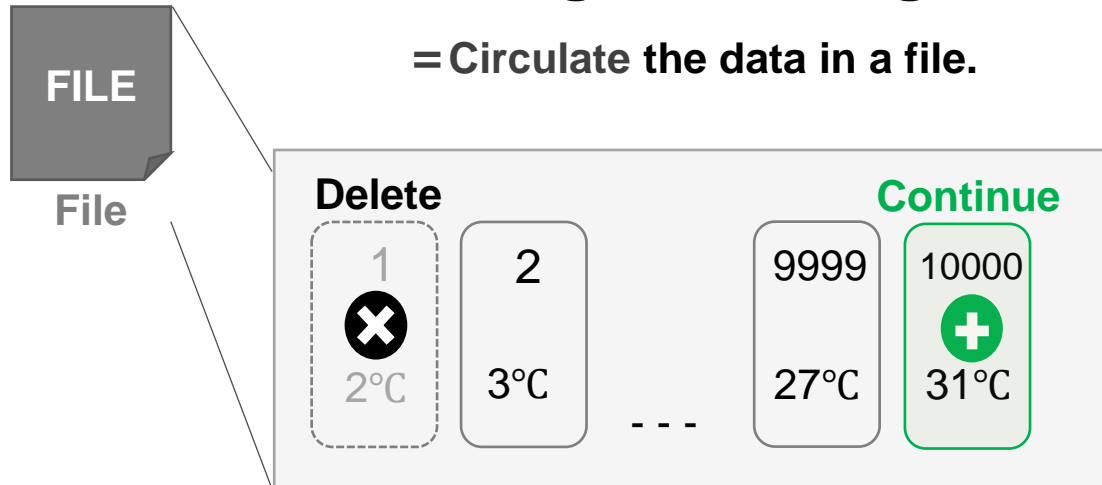
Difference between Ring Capturing and Memory Loop



Ring Capturing is a function that saves only the latest data of a specified number. **Memory Loop** is a function that storages data using the memory of the recording destination to the maximum extent.

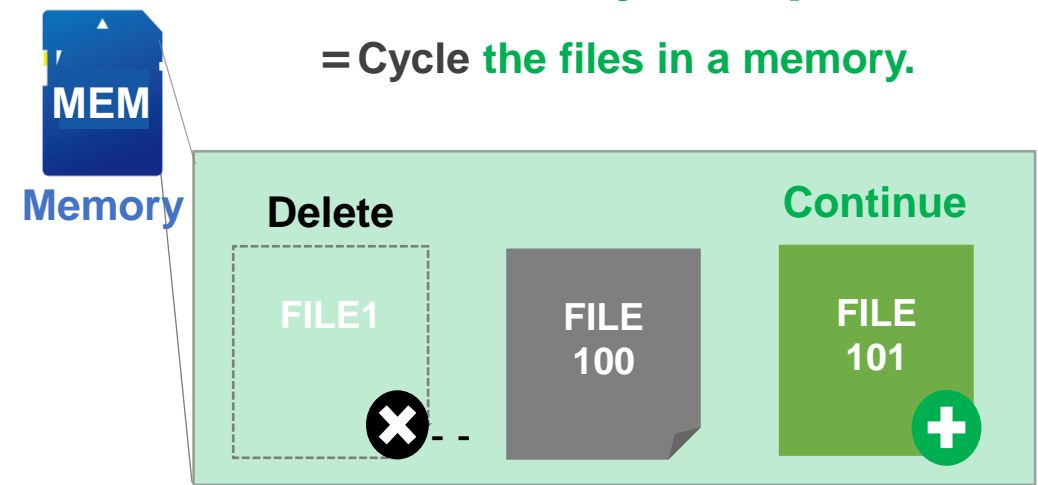
Ring Recording

= Circulate the data in a file.



Memory Loop

= Cycle the files in a memory.



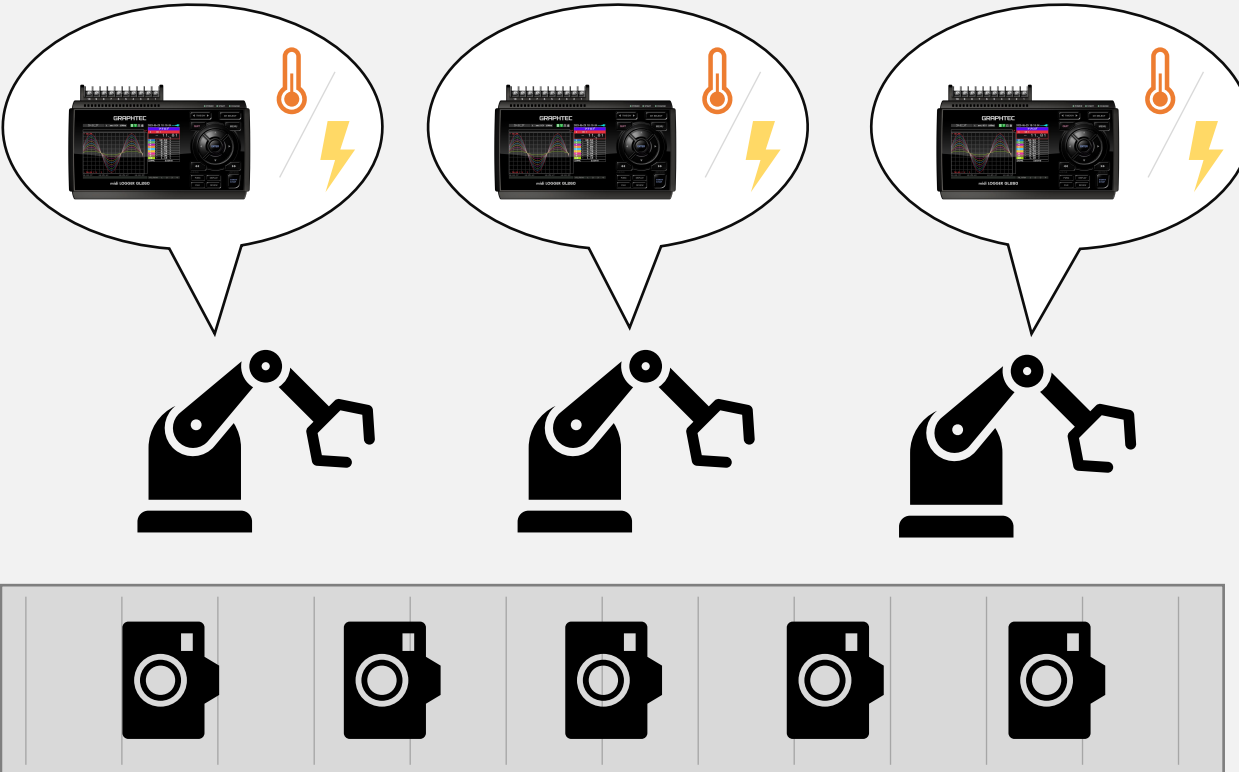
<Memory Loop> Application Example



Maintenance of production line



We want the to monitor the machine condition semi-permanently. Also, the recording should be stopped and the data to be saved for 6 months only when a trouble caused.



- Ring Recording

Sampling speed needs to be slower than 200ms.



- Relay Recording

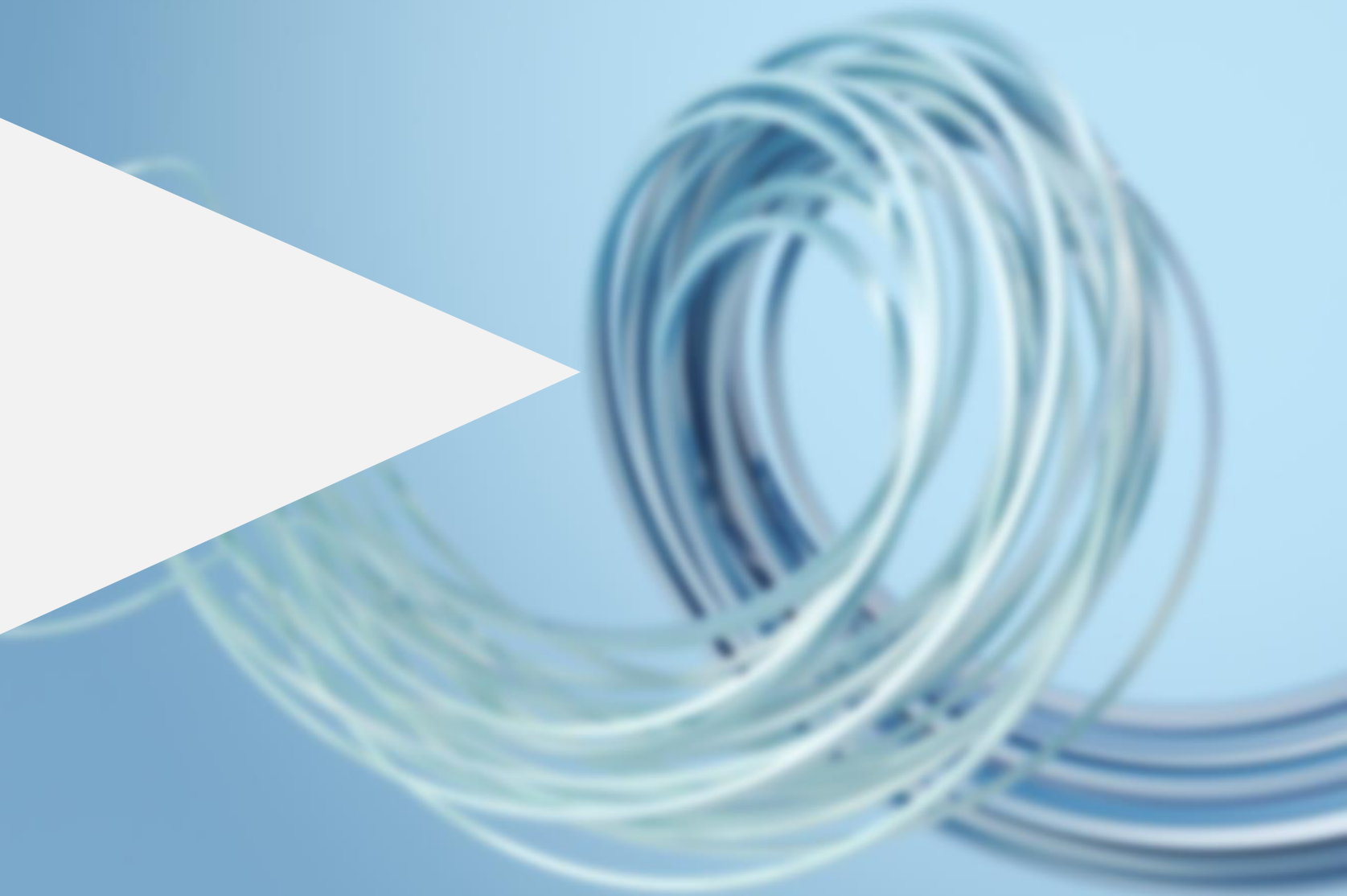
Recording stops automatically when the memory is full



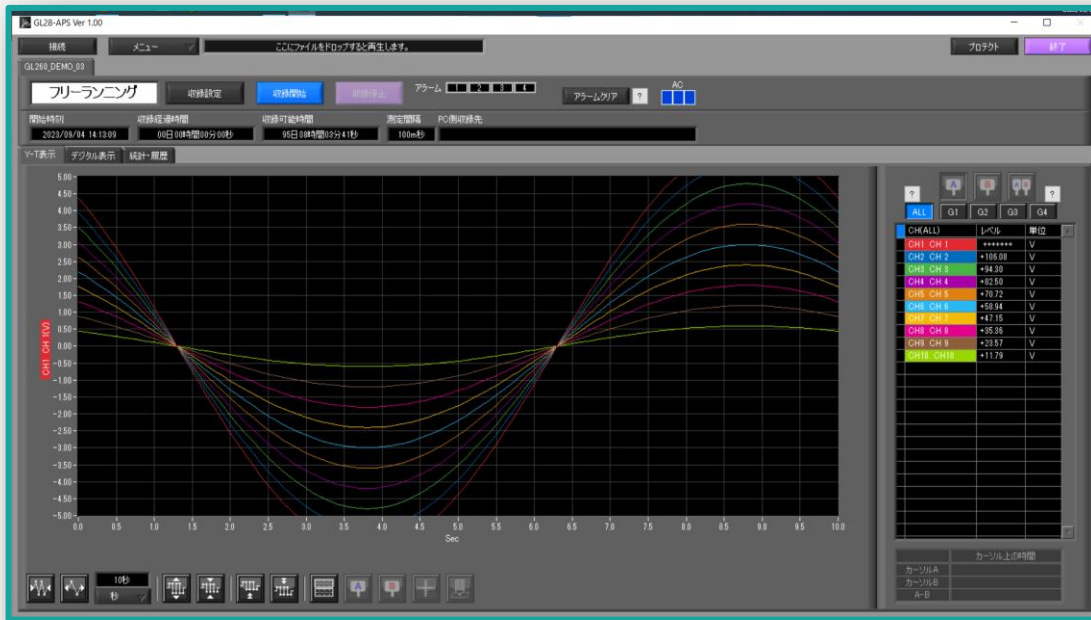
- Memory Loop



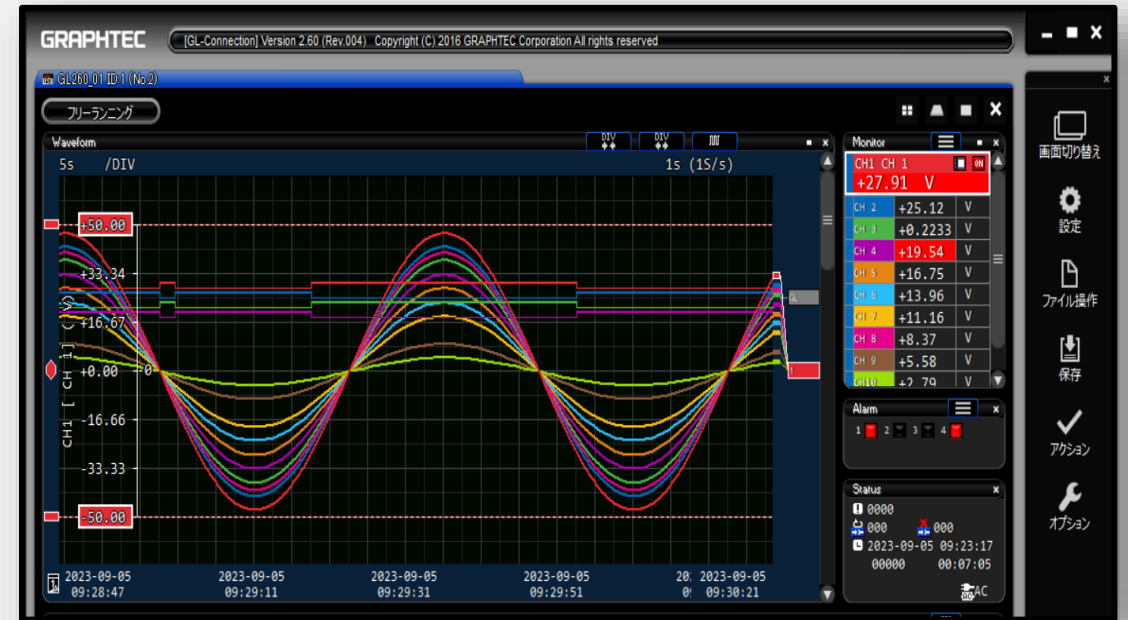
Software



Standard Software



GL28-APS



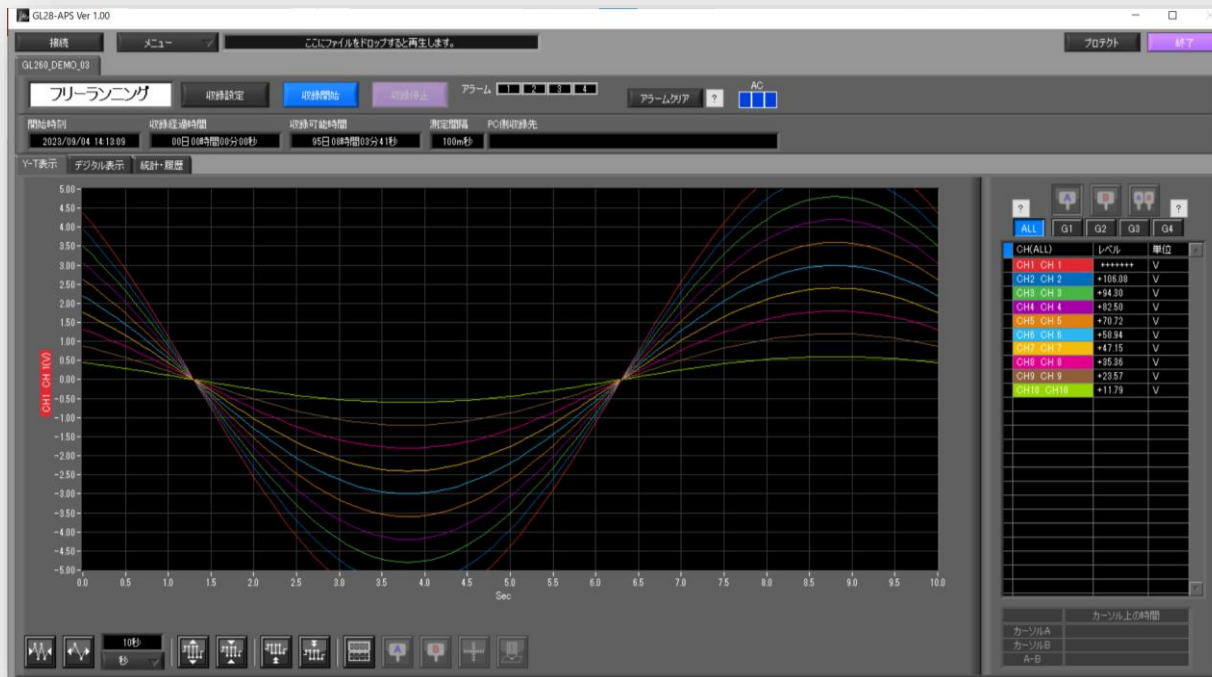
GL-Connection

Software for GL260

GRAPHTEC

GL28-APS

Supported models: GL260 / GL840 / GL240



Max. 10 units can be connected

Standard software to check, record, and save waveforms on a PC

Easy operation

Versatile display

Intuitive UI design
Simple specifications

Digital Value Screen
Statistical calculation screen
Integral bar graph screen

⚠ GL820 / GL220 / GL100 are supported by GL100_240_840-APS.

GL-Connection

Supported models: GL260 / GL7000 / GL2000 / GL980 / GL840 / GL240 / GLT400

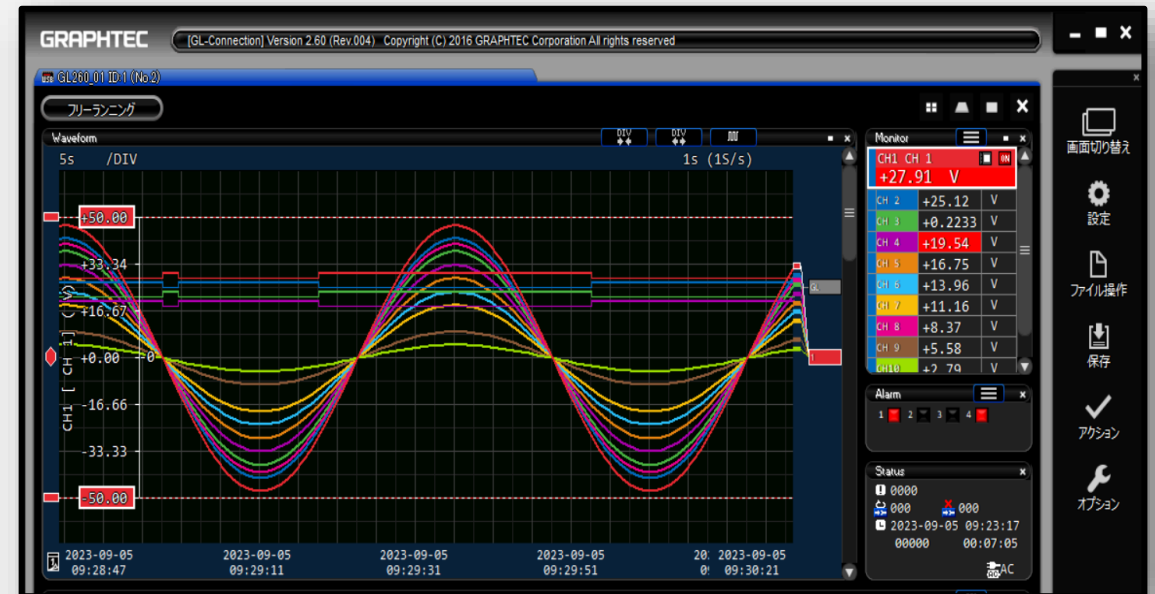
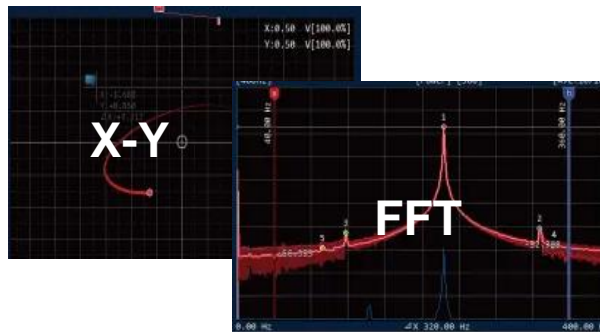
Multiple GL series can be managed at once.

Focus on visibility



Monitor multiple loggers!

Various waveform displays



New Battery Pack

The battery pack will be changed from GL260.

B-569

GL240



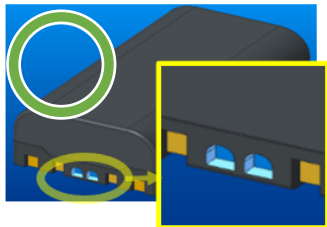
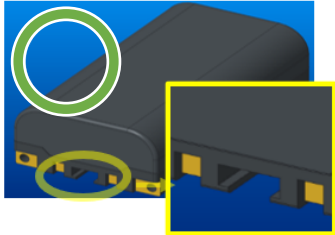
B-573

GL260

Model	B-569	B-573
GL240	Y	-
GL840	Y	-
GL980 / GL2000	Y	-
GL260	*	Y

*Battery performance declines by 20%.

Model	B-569	B-573
Capacity	2900mAh	2875mAh
Charge voltage	8.4V	7.2V

Model	B-573	B-569
GL260		
GL240	